

DRIVE ON



EDARAN TAN CHONG MOTOR

VOLUME 25 ISSUE 2 / nissan.com.my

THE ULTIMATE PICKUP:
**ALL-NEW
NISSAN
NAVARA**

**Nissan
Leads With
Technology
At Tokyo
Motor Show**



**NISSAN & TAN CHONG ELEVATE
SAFETY TO THE NEXT LEVEL**



IMPUL X-TRAIL

X-TRAIL T32 TOTAL TUNE-UP SYSTEM



The New Pulse of Adrenaline

Experience newfound exhilaration with the **X-Trail Tuned by IMPUL**. Enhanced with **IMPUL Complete Aerokit** and **18" IMPUL Aura SX-50 Wheels** in chrome bronze and gloss black finish for sporty elegance like no other. Loaded for sharper handling with **IMPUL Sports Springs** and **Continental ContiMaxContact MC5 Tyres**, every part is engineered to complement the X-Trail's 2.0L and 2.5L Twin CVTC Engine.

Experience a seamless union of the urban thrill and dynamic sportiness at your nearest Nissan showroom.



3-year/ 100,000km warranty, whichever comes first. Terms and conditions apply.

[NissanMalaysia](#)

www.impul.com.my or call 1800 88 3838

2.5L 4WD Twin CVTC | Max Power 171ps / 6,000rpm | Max Torque 233Nm / 4,000rpm

2.0L 2WD Twin CVTC | Max Power 144ps / 6,000rpm | Max Torque 200Nm / 4,400rpm

Subject to change without prior notice. Terms and conditions apply.

Actual car specifications may vary from model shown.



EDARAN TAN CHONG MOTOR SDN. BHD. (230609-H)
A subsidiary of Tan Chong Motor Holdings Berhad (12969-F)

Contents >>>>

VOLUME 25 ISSUE 2 / nissan.com.my



14

THE ALL-NEW NP 300 NAVARA

The latest generation of the hard-working pickup truck that embodies Nissan's legacy of excellence

06



TECHNOLOGY THAT TRULY EXCITES

Nissan reaffirms its technological leadership at the 2015 Tokyo Motor Show



28 RIANG RAYA

ETCM helps make dreams come true!



26 SAFETY FIRST

The Nissan Safety Campaign 2015 ends on a high note

24 Advancing gender diversity
Reducing the gender gap in the auto industry

35 Glenmarie 4S centre
First class service and a unique retail experience to Nissan customers

36 Servicing your Nissan
All the important information at your fingertips



38 HERITAGE
The Tama Electric Car

DRIVE ON

EDARAN TAN CHONG MOTOR

President/Managing Director
Tan Chong & Sons
Motor Co. Sdn. Bhd
Dato' Tan Heng Chew

Executive Director of ETCM
Dato' Dr. Ang Bon Beng

Director of Marketing
& Product Planning of ETCM
Tan Keng Meng

General Manager
of Sales Operations
Tay Chai Li

Publisher
Edaran Tan Chong Motor Sdn. Bhd.

Editor-in-Chief
Tay Chai Li

Advertising & Circulation
Junie Lee

Volume 25 Issue 2
Published by
Edaran Tan Chong Motor Sdn. Bhd.
(230669-H)
HQ: 21, Jalan Ipoh Kecil,
50350 Kuala Lumpur
Tel: 03 - 4047 8788

This magazine is distributed to all Nissan customers at no charge. The opinions and views expressed in this publication are not necessarily those of the publisher. The publisher and parties directly involved in the production of this publication assume no responsibility for any effect arising from errors or omissions. No portion of this magazine may be reproduced in any form without written consent from the publisher. All rights reserved.

Disclaimer: All price references in this magazine are valid at the time of print. ETCM shall not be liable for subsequent price updates or changes.

NISSAN CUSTOMER CARE CENTRE
1800-88-3838

Roadside Assistance | Service Appointment | General Enquiries

Foreword >>>>

Democratising technology

Technology changes lives. The many ways which we communicate with family and friends, the manner and speed which we consume information, the advances are nothing short of amazing. But technology never stands still, and the next revolution will change how we get around.

Showcased by Nissan at the 2015 Tokyo Motor Show, the IDS Concept epitomises the future of mobility. As a technology powerhouse, Nissan is already at forefront of the electric vehicle arena with the 100% electric Leaf, selling more than 200,000 units since its global introduction five years ago, with owners clocking over two billion kilometers worth of zero-emission mileage.

By leveraging on its leadership in EV production and battery technologies, Nissan is forging ahead with Nissan Intelligent Driving – the autonomous drive technology that will “revolutionise the relationship between car and driver, and future mobility,” according to Chairman and CEO, Carlos Ghosn at 2015 Tokyo Motor Show. Supported by new advancements in artificial intelligence, Nissan has already begun testing a prototype autonomous vehicle (based on the Leaf) on highways and city roads in Japan with the vision to achieve not just Zero Emission, but also Zero Fatality by eliminating human error.

In fact, the technologies that help preserve lives already exist in many current Nissan models that you drive. Take for example the new Nissan X-Trail crossover. Apart from active safety features such as Vehicle Dynamic Control and Active Chassis Control to help you avoid an accident, it is also fitted (as standard) with an advanced multi-camera system known as Around View Monitor (AVM). This innovative feature offers a unique overhead view to ensure the driver is fully aware of the surroundings, particularly the presence of pedestrians. Nissan is the first manufacturer in the world to incorporate AVM technology in mass production.

First-in-class, cutting-edge features can also be found in the all-new Nissan Navara pickup that sets a new benchmark in the segment with LED headlamps and daytime running lights, electronically-controlled limited slip differential, 7-speed automatic transmission, vehicle dynamic control, hill-start assist, hill descent control and multi-link coil spring rear suspension. In fact, throughout our model line-up, Nissan and ETCM are making technology accessible and affordable, and proving that advanced vehicle features are for everyone, not just the exclusive domain of luxury brands.



▲ Nissan is already testing autonomous drive technologies on a prototype based on the Leaf



Innovation
that excites

NEW ALMERA FACELIFT



nismo

WHERE SPORTY MEETS ELEGANCE

New ALMERA Facelift offers a new level of sportiness and an engaging driving experience. With its dynamically sculpted body, class-leading cabin space and elegantly redesigned interior, get ready to make an impression that sets pulses racing.

Experience it today with a test drive at your nearest Nissan showroom.



Stylishly Designed Interior with Premium Piano Black Centre Console

6.5" Display with Internet Connectivity and Multimedia Navigation

Automatic Climate Control

Push Start Ignition with Intelligent Key

LOW OWNERSHIP COST



AFFORDABLE PERIODIC MAINTENANCE SERVICE

Below RM3,500 for 100,000km (inclusive of fully synthetic oil, parts and labour costs which applicable for E [Manual] only)



AFFORDABLE GENUINE SPARE PARTS

For service & wear and tear parts



OPTIMAL SERVICE INTERVALS

Scheduled service every 10,000km only



OUTSTANDING FUEL EFFICIENCY

14.9km/L (based on internal testing data)

[NissanMalaysia](#)

www.nissan.com.my or call 1800 88 3838.

1.5L CVT | Max Power 102ps / 6,000rpm | Max Torque 139Nm / 4,000rpm.

Actual car specifications may vary from model shown. Subject to change without prior notice. Terms and conditions apply.



EDARAN TAN CHONG MOTOR SDN. BHD. (230669-H)
A subsidiary of Tan Chong Motor Holdings Berhad (12969-P)



Guess which scenes show the real car?

TECHNOLOGY THAT TRULY EXCITES

Nissan reaffirms its automotive technological leadership at the 2015 Tokyo Motor Show



At the recent 44th Tokyo Motor Show, Nissan's President and CEO, Carlos Ghosn, showcased technologies that will drive the brand forward into the next decade. Ghosn's statement that "Nissan is a technology powerhouse" was exemplified by cutting-edge concepts and models on show that not only reiterated Nissan's commitment to class-leading safety features, zero-emission electric-powered vehicles, but also pave the way to the eventual introduction of autonomous drive – vehicles smart enough to drive themselves without human intervention.



According to Ghosn, Nissan's forthcoming technologies will revolutionise the relationship between car and driver, and the future of mobility. After leading the development and expansion of EV technology, Nissan is pushing the boundaries of automotive technology once again. By integrating advanced vehicle control and safety technologies with Artificial Intelligence (AI), Nissan is already among the leaders at developing practical, real-world applications of autonomous drive technology, after declaring its vision in 2013 to equip innovative autonomous drive technology on multiple models from 2020 onwards. Here are the stars of the show:



Nissan IDS Concept – A vision for the near future

Self-driving vehicles or autonomous drive might conjure an image of transportation lacking in satisfaction and engagement. However, the Nissan IDS Concept promises a very different vision of tomorrow.

“ Nissan's forthcoming technologies will revolutionise the relationship between car and driver, and the future of mobility ”



In autonomous Piloted Drive mode, the car's performance – from accelerating to braking to cornering – imitates the driver's own style and preferences. While in Manual Drive mode where the driver has control, the IDS Concept's linear yet urgent acceleration and cornering are pure and exhilarating, with the electronics and sensors working seamlessly in the background to provide assistance and assurance of safety. In the event of imminent danger, the car will assist the driver in taking evasive action.

In addition to learning, the Nissan IDS Concept's artificial intelligence communicates like an attentive partner. From information concerning traffic conditions to the driver's personal schedule, the IDS Concept is capable of a driving experience that is rewarding, comfortable and safe. Powered by a 60KWh battery pack (about three times the size of a Nissan Leaf's) and supported by lightweight construction and efficient aerodynamics, the IDS Concept is able to travel long distances on a full charge of electricity delivered via wireless charging.



Teatro for Dayz – A car for the “share” generation

Nissan describes the generation that went straight from the cradle to digital technology as “share natives.” This generation will reach driving age in a few years, but with little interest in cars. What kind of cars will move them? Will they even want to drive? Nissan has a solution.

The name is derived from the Italian word for “theatre” applied to Nissan’s popular mini kei-car in Japan. The concept features an innovative design which enables share natives to create and share experiences immediately with friends on-board and online. Designed under the concept of “a clean canvas,” its key feature is its smooth white interior which allows the instrument panel, seats and even door trim to serve as canvas for expression.

Built on Nissan’s EV technology, Teatro for Dayz is as much a giant mobile battery as a four-wheel transportation. To a share native, cars should also function as a mobile device for creating, connecting and sharing in ways solely dictated by the occupants themselves.



Nissan Gripz Concept – EV-based series hybrid sports crossover

The Nissan Gripz Concept was conceived by designers in both Europe and Japan, it aims to blend the ability and practicality of a compact crossover with the excitement and performance of a sports car.

The external design of the Nissan Gripz Concept is based on the “emotional geometry” body sculpting concept that depicts strong contrasts through the dynamic, high-tension, edgy surface, with clever throwbacks to Nissan’s legendary rally cars of the 70s. The interior has a “gliding wing” instrument panel inspired by road bicycle elements, showcasing a lightweight frame design that exudes strength with simplicity.

Powered by an EV-technology-based series hybrid system – Pure Drive e-Power – the Nissan Gripz Concept delivers a smooth, refined yet exhilarating driving experience with outstanding fuel efficiency, featuring an ultra-efficient petrol engine and the electric motor found in the Nissan Leaf.



Nissan at the 2015 Tokyo Motor Show



“ The Nissan Gripz Concept blend the ability and practicality of a compact crossover with the excitement and performance of a sports car. ”

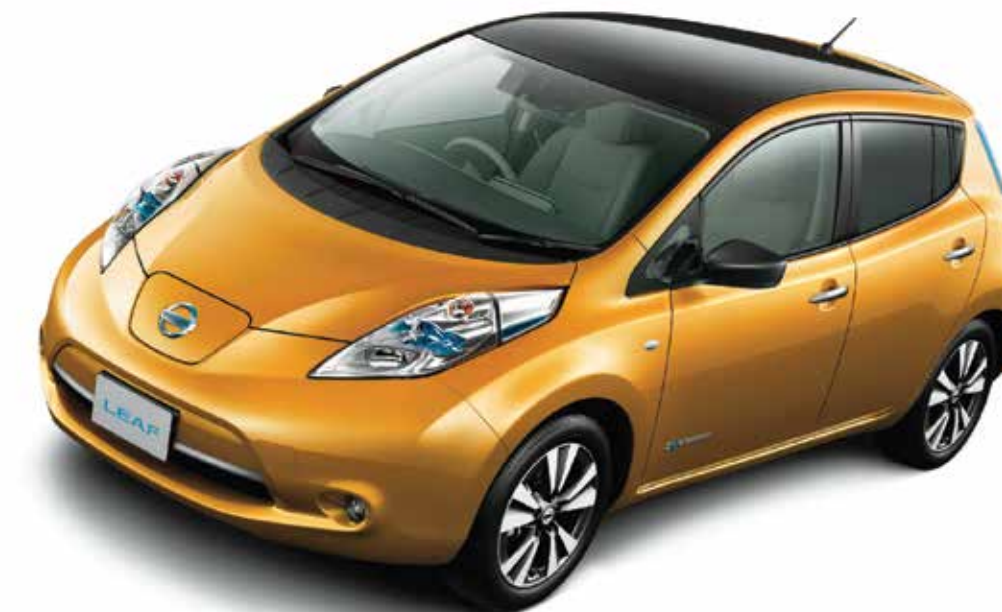


Nissan Concept 2020 Vision Gran Turismo

Nissan Concept 2020 Vision Gran Turismo is a concept supercar developed in conjunction with Polyphony Digital Inc., the creators of the racing video game Gran Turismo for PlayStation. Originally unveiled at the Goodwood Festival of Speed 2014 in England, the supercar concept was given a new coat of paint – Fire Knight red and features a new variation of Nissan’s signature V-Motion grille. The Vision Gran Turismo is a real-world embodiment of a virtual car that gamers around the world have been experiencing Nissan’s dynamic performance and innovation, perhaps it will become a reality as the next GT-R?

New and improved Nissan Leaf

Since the Nissan Leaf’s introduction in the late 2010, the world’s first mass production electric vehicle has sold close to 200,000 units worldwide,



making it also the world’s best-selling EV. For 2016, the Leaf will be capable of a single-charge driving range of up to 280 km (based on Nissan’s Japanese driving conditions) as well as Forward

Emergency Braking – designed to help drivers avoid or mitigate the impact of frontal collisions – and Lane Departure Warning. The most popular EV in the world keeps on getting better.

NISSAN IDS CONCEPT: THE FUTURE OF DRIVING

Imagine a future with zero accidents, zero emissions and maximum fun behind the wheel



The Nissan IDS Concept embodies Nissan's concept of autonomous drive technology and represents what Nissan believes next-generation vehicles should be. The technology that is central to the IDS Concept – Nissan Intelligent Driving – improves a driver's ability to see, think and react. It is also able to compensate for human error that causes more than 90 percent of all car accidents, yet offers a zero-emission driving experience that's also fun for its driver and occupants.

Design – Together, we ride

"A key point behind the Nissan IDS Concept is communication. For autonomous drive to become reality, as a society we have to consider not only communication between car and driver but also between cars and people. The Nissan IDS Concept's design represents Nissan's vision of autonomous drive as

expressed in the phrase Together, We Ride," says Mitsunori Morita, Design Director.

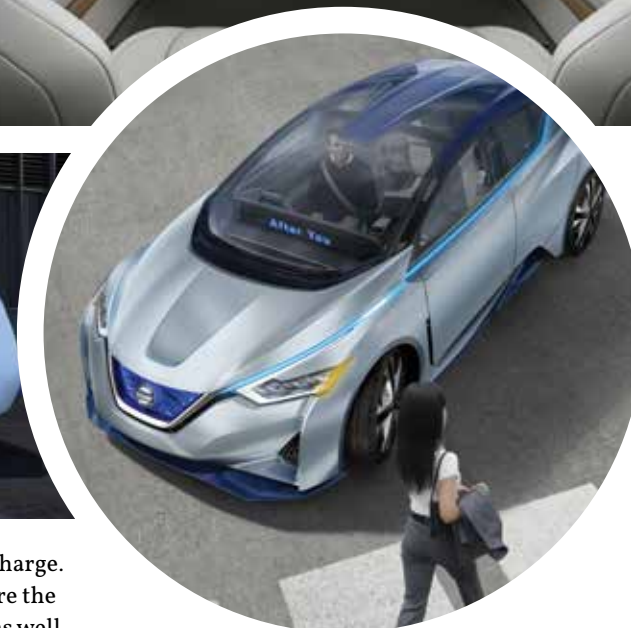
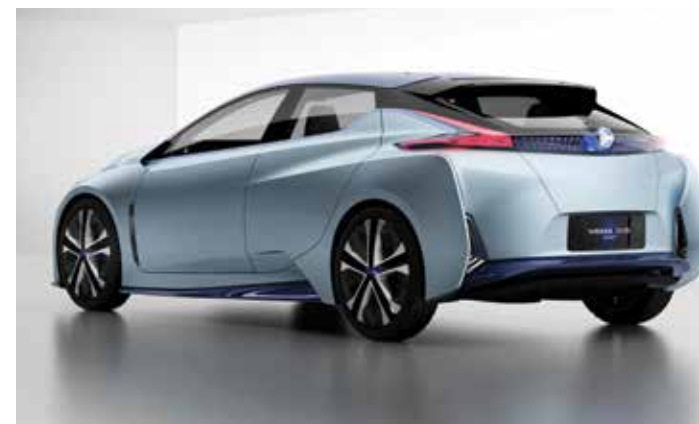
Two different ways to enjoy the experience

Together, We Ride is clearly demonstrated in the interior design. "The Nissan IDS Concept has different interiors depending on whether the driver opts for Piloted Drive (autonomous mode) or Manual Drive. This was something that we thought was absolutely necessary to express our idea of autonomous drive," says Morita.

Even though it is a hatchback, the Nissan IDS Concept's long wheelbase enables comfortable seating space for four adults. But the cabin becomes even more spacious when the driver selects Piloted Drive. In this mode, the steering wheel recedes into the centre of the

instrument panel and a large flat screen emerges. Driving-related operations are then handled through artificial intelligence, with voice and gestures from the driver. All four seats would also rotate slightly inward facilitating conversation, like relaxing in a living room.

When the driver selects Manual Drive, the roomy interior transforms to put the driver in control, with all seats facing forward. The steering wheel appears along with instrument meters and a heads-up display of key driving information. Interior lighting changes to stimulate concentration. Nissan's use of hollow-structure A-pillars helps ensure excellent visibility by reducing blind spots and also contributes to the feeling of open space. The transformation to Manual Drive can be carried out with ease via a switch between the front seats



called the PD Commander. This is the only control the driver can physically operate when the car is in Piloted Drive.

Exterior design – confidence and harmony

Through its innovative communication capabilities, the Nissan IDS Concept promotes confidence and a sense of harmony for those outside the car as well. Various exterior lights and displays convey the car's awareness of its surroundings and signals its intentions. The car's side body line, for example, is actually an LED that Nissan calls the Intention Indicator. When pedestrians or cyclists are nearby, the strip shines white, signalling that the car is aware of their presence. An electronic display on the dashboard can also flash messages alerting pedestrians. This natural, harmonious system of communication signals a new future with cars.

Advanced aerodynamic performance

According to Morita, by the time Nissan Intelligent Driving technology goes to production, EVs will be able to

go great distances on a single charge. Getting to this point will require the further evolution of batteries as well as aerodynamic performance. The IDS Concept showcase the most advanced aerodynamic technologies from Nissan.

The height of the carbon fibre body was constrained to 1,380 mm, sharply minimizing aerodynamic drag, while positioning the wheels close to the corners of the body enables a wrap-around cabin design. Nissan selected large-diameter wheels for high-performance and sportiness, but with narrow 175mm wide tires to minimize air and roll resistance. The wheels have a layered design with thin fins that create tiny vortexes of air flow on the wheel's surface, contributing to smooth air flow.

The icicle pattern on the Nissan IDS Concept's grille symbolizes purity and cleanliness, shaped like a stack of ice blocks, the grille pattern appears transparent, while the car's bluish satin silver body colour heightens the impression of a comfortable and secure cabin space.

Extended EV technology

The Nissan IDS Concept is fitted with a high-capacity 60 kWh battery, and thanks to its outstanding aerodynamics and lightweight full-carbon-fibre body, the vehicle is designed for long distance travel on a single charge. Other technologies on the Nissan IDS Concept include Piloted Park that can be operated by smartphone or tablet, and wireless charging.

Nissan targets zero fatalities, zero emissions

In order for our auto-centric society to be sustainable, complex issues such as sustainable energy, climate change, pollution and traffic safety must be addressed. At Nissan, the dreams of realising zero emissions and zero fatalities on the road are pursued relentlessly to achieve true sustainable mobility. Nissan believes that the Nissan IDS Concept will evolve into a leading innovation for next generation mobility and make the "two zeroes" a reality.



NP300 NAVARA: THE ULTIMATE PICKUP

Nissan redefines the pickup truck segment once again with the all-new NP300 Navara

The all-new Nissan NP300 Navara is the latest generation of the hard-working pickup truck that embodies Nissan's legacy of excellence in this segment. Redesigned and engineered with new levels of comfort, convenience and advanced technologies, and backed by 80 years of truck know-how and legendary reliability, the NP300 Navara meets and exceeds truck owners' expectations.

Styled to perfection

Even though the design of pickups

typically follows function, Nissan gave the NP300 a sportier, more 'emotional' appeal, while maintaining its distinctive DNA. This can be seen from the dynamic side profile of the NP300 Navara, with highly sculptured surfaces on the doors expressing strength and character.

At the front, Nissan's signature V-motion motif flows from the grille to the bonnet, and all the way through to the fenders. This is further enhanced by boomerang-shaped LED daytime running lights that exude sophistication, complemented

by chrome waist line moldings and turn indicators on the wing mirrors.

Masterfully engineered

It may be more powerful, but the new Nissan NP300 Navara actually achieves lower running costs through enhancements in powertrain, weight reduction and improved aerodynamics (first in the segment to offer a rear deck-lid spoiler), on top of having higher ground clearance as well as a larger cargo bed. As a result, the NP300 is 11% more fuel efficient than the previous generation D40 Navara.



“ Nissan gave the NP300 a sportier, more 'emotional' appeal, while maintaining its distinctive DNA. ”

Like its predecessor, the NP300 sets the benchmark once again with the highest output in its class – 190PS and 450Nm for the flagship VL grade, and 163PS and 403Nm for the other variants (all 4WD), including the Single Cab 4WD variant which is now the most powerful in its class.

Channeling power of the NP300 Navara's to the wheels is a new 7-speed automatic

transmission – the first in the segment to offer more than six forward gears. Having a wide ratio range helps the Navara to not only better fuel efficiency, but also driving control and refinement. An updated 6-speed manual transmission is available as well.

Built on a strong foundation

For uncompromised comfort and performance on or off the road, the

NP300 is built on a tough yet lightened frame chassis featuring independent double wishbones at the front, and a first-in-class multi-link suspension supported by coil springs and dampers at the rear. Unlike traditional leaf springs and torsion beam set ups, the NP300's multi-link system is capable of unparalleled ride comfort for passengers sitting in the back, with greater suspension control and articulation when tackling rough terrain.

SPECIFICATIONS

NISSAN NP300 NAVARA 2.5L TURBO

Engine:	2.5-litre, 4-cyl, Common-rail turbo
Output:	163PS-190PS@ 3,600rpm, 403Nm-450Nm@ 2,000rpm
Drive system:	Electronically controlled 4WD system (2H, 4H & 4L)
Transmission:	7-sp automatic or 6-sp manual
Suspension:	Double-wishbone (Front), Multi-link (Rear)
Safety:	Dual front airbags, VDC, HSA, HDC
Warranty:	3-year or 100,000km



On top of having a drivetrain with the ability to shift-on-the-fly, the NP300 also utilises an electronically controlled 4x4 system that reacts quicker in slippery conditions compared to mechanical systems. The NP300's Vehicle Dynamic Control (VDC) system works hand-in-hand with Active Brake Limited Slip (ABLS) for optimum 4x4 performance, supported by Hill Start Assist (HSA) and Hill Descent Control (HDC) – features usually found in premium SUVs.

Exceeding expectations

Nissan designers wanted the NP300

interior to represent a new benchmark in the segment. From the full-colour Advanced Drive Assist Display, high quality accent trim on the sculptured dashboard, automatic climate control with digital display, to the fine stitching on the leather seats, the NP300's interior is simply classy.

Apart from the premium experience, the NP300's cabin also does the basic things right, with ingress, egress, seat comfort (Zero Gravity seats upfront, reclined seat angle at the back) and visibility improved. And in what is

yet another class-leading feature, rear air-con ventilation is standard. So when it's not in business mode, the NP300 Navara is happy doubling up as premium transportation for family and friends.

Clearly, a modern pickup truck needs to be multi-talented. It has to balance the comfort and quality of a passenger car with the robustness and durability of a 4x4, while looking attractive doing all of that. The all-new Nissan NP300 Navara is one such vehicle – it is indeed the ultimate pickup truck.



80 years, 180 countries, 140 million owners

The roots of Nissan pick-ups dates back to the original Datsun Truck – the first proper commercial model that was launched in 1935. After millions of hard miles and satisfied customers, the basic Nissan workhorse evolved over decades and many generations to become the D22 (known as either the Frontier or Navara depending on markets) of the late 1990s, and subsequently the D40 of the

new millennium, both models renowned for their powerful diesel engines with class-leading output and unmatched durability. While the usage patterns of pick-up trucks have evolved over the recent years, Nissan has always remained at the forefront of pick-up truck design and technology, with the NP300 Navara representing the best of what a modern pick-up should be.





ETCM WELCOMES THE ALL-NEW NISSAN NP300 NAVARA

The Ultimate Pickup is successfully launched, members of media put it to the test

Held at the brand new ETCM Glenmarie 4S Centre, the all-new 12th generation Nissan NP300 Navara was successfully launched in November, 2015 by Dato' Seri Ong Ka Chuan, the International Trade and Industry Minister II, who was accompanied by the President of Tan Chong Motor Holdings, Dato' Tan Heng Chew and Mr. Kenji Naito, Senior Vice President of Nissan Motor Asia Pacific Co. Ltd.

Speaking at the launch event, Executive Director of ETCM, Dato' Dr. Ang Bon Beng said that new NP300 Navara is engineered to meet the challenges of any terrain. "We named the NP300 Navara 'The Ultimate Pickup', as it has the flexibility, sturdiness and reliability for work, yet comfortable and spacious for the weekend. Since ETCM began pre-orders in mid-October, we have collected

over 1,000 bookings of the all-new Nisan NP300 Navara. Such enthusiastic response only serves to strengthen our resolve to work even harder to ensure that 'The Ultimate Pickup' seals its place as a top contender in Malaysia's pickup segment - and ultimately become the pickup of choice for Malaysians," added Dato' Dr Ang.

Tan Keng Meng, ETCM's Director of Marketing and Product Planning, revealed a total of six variants of the NP300 Navara, ranging from the 163PS/403Nm 2.5-litre 4WD Single Cab workhorse to the top-of-the-line, 190PS/450Nm 2.5-litre 4WD VL Double Cab.

Media drive

Upon the conclusion of the launch, members of the media adjourned to a half-day test drive of the all-new NP300



▲ (From left) Tan Keng Meng, Director of Marketing & Product Planning (ETCM), Kenji Naito, Senior Vice President, Nissan Motor Asia Pacific, Dato' Dr. Ang Bon Beng, Executive Director (ETCM), Dato' Seri Ong Ka Chuan, Minister II of International Trade and Industry, Dato' Tan Heng Chew, President, Tan Chong Motor Holdings Bhd, and Madam Wang Shu Erh



Navara. The test route passed through urban highways that eventually led to the sprawling Malaysia Argo Exposition Park at Serdang (MAEPS). The activity at MAEPS saw the NP300 take on a tough off-road hill course that was made even more challenging by the heavy rain which fell overnight over MAEPS.

Suffice to say, every NP300 and its occupants not only made it through the slippery path with aplomb, but also enjoyed a smoother-than-usual ride courtesy of the multi-link coil spring rear suspension. Members of the media were able to make full use of the electronically-controlled 4WD system of the NP300 by shifting into 4x4 mode on-the-fly via its dashboard-mounted rotary switch.

With the system set at 4L mode (50:50 torque distribution between front and rear axles), the NP300 showed exemplary traction and composure on surfaces with deep mud, aided by the immediate response of the Active Brake Limited Slip control (ABLS). And when it came to descending steep slopes, the NP300's electronic Hill Descent Control (HDC) automatically regulated vehicle speed to ensure safe passage with the driver fully focused on steering.

For good measure, the skies opened up on the return journey back to ETCM Glenmarie 4S Centre. It is over this stretch that the members of the media were able to further sample the surefooted handling of the NP300 on wet roads, and experience the driving refinement of the 7-speed automatic as well as the feeling of security offered by its premium quality cabin.

AROUND VIEW MONITOR

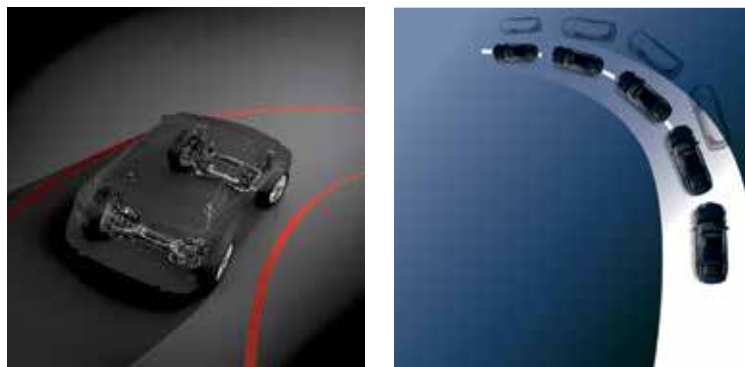
Did you know that Nissan was the pioneer of this technology back in 2007? Around View Monitor (AVM) was a 'world's first' when it was introduced in the second-generation Elgrand flagship MPV. As its name suggests, the technology offers an overhead 'bird's eye' view of the surroundings by collating real-time image captured through four ultra-wide angle (180 degrees) cameras mounted on the front, rear and sides of the vehicle. The live view is then shown on a display usually mounted on the centre console. AVM is particularly useful when parking in tight spaces where minute adjustments are required, and is fitted as standard on all X-Trail models.



ACTIVE UNDERSTEER CONTROL



The Teana is the first ever Nissan model to offer this innovative driving assistance technology that not only enhances safety, but also driving pleasure. When negotiating a corner at speed or under load, passenger cars have a natural tendency to understeer when the front tyres begin to lose adhesion, the result is that the car can end up running wide and off its intended path. Active Understeer Control (AUC) is able to sense understeer and applies subtle braking to the inside wheel to help the car achieve sharper turn-in and greater steering control when cornering. AUC is a standard feature on all Teana models.



Innovation
that excites

ALL-NEW NP300
NAVARA



The Ultimate Pickup

PERFORMANCE • INNOVATION • ENDURANCE

First, we introduced you to the Mother Trucker. Now, meet its next-generation successor, the All-New NP300 Navara. Its bold exterior, enhanced by **LED Headlamps with LED Daytime Running Lights** and **striking 18" Alloy Wheels**, takes you from the city to the most challenging terrains seamlessly. Featuring the **Shift-On-The-Fly 4x4** to take on any terrain in total confidence and ultimate comfort with **Zero Gravity Inspired Seats** and **Rear Air Conditioning Vents**.

Max Power
190ps
3,600rpm

Max Torque
450Nm
2,000rpm

FULLY
IMPORTED

3 YEAR
WARRANTY

3-year/100,000km warranty,
whichever comes first.
Terms and conditions apply.



Scan to watch
The Ultimate Escape

Experience the superiority of the All-New NP300 Navara now at your nearest Nissan showroom.



[NissanMalaysia](#)

www.np300navara.com.my or call 1800 88 3838

2.5L V6 Turbocharged 4WD | Max Power 190ps / 3,600rpm | Max Torque 450Nm / 2,000rpm
2.5L V6 SE, E, S/C Turbocharged 4WD | Max Power 163ps / 3,600rpm | Max Torque 403Nm / 2,000rpm

*The 1st Japanese pickup with Multi-link Rear Suspension in Malaysia. **Available as an option.
Actual car specifications may vary from model shown. Terms and conditions apply.

EDARAN TAN CHONG MOTOR SDN. BHD. (230669-H)
A subsidiary of Tan Chong Motor Holdings Berhad (129699-P)



DRIVING TECHNOLOGY

Infiniti guests experience pioneering technologies and true luxury performance



Infiniti Malaysia recently showcased the full array of pioneering innovations that exist in its range of luxury models to invited guests. Held at the exclusive township of Desa Park City, Infiniti Drive Malaysia entailed a half-day driving programme for customers to experience world's first technologies that separate Infiniti vehicles from the rest.

The event saw participants putting the world's fastest accelerating hybrid sedan, the Q50S Hybrid, through various disciplines including full-bore standing starts and emergency stops, to experience the accelerative force of the electrically-assisted 364hp sports sedan, as well as the Q50's fully-automated Forward Emergency Braking feature,

where drivers were asked to trust the car's ability to sense a frontal object and come to a complete stop without any human intervention.

Paired with professional driving instructors, participants were also able to test the Q50's Direct Adaptive Steering (DAS) – the world's first electronically-controlled steer-by-wire steering system – through a tight obstacle course to better understand how DAS is able to isolate unwanted steering kickback over bumps while offering a customisable steering response and weightage desired by the driver.

Upon completion of the on-track exercises, participants were then given the opportunity to test the full range of

Infiniti models over a specially-devised road course. The models included the QX50 and QX70 sports crossovers, the ultra-luxurious QX80 SUV that can seat up to eight passengers in comfort, the Q50 and Q70 luxury sedans. Here the drivers were able to trial the sporty performance of the Infiniti models as well as put innovative features such as Lane Departure Prevention, Intelligent Cruise Control and Active Lane Control to the test in real-world conditions.

Participants who successfully completed all the disciplines were awarded certificates while the select few who topped their respective groups in the Q50S Hybrid braking test took home the prize of an Infiniti Red Bull Formula 1 scale model or Infiniti Red Bull jacket.



Innovation that excites

NEW
SERENA
S-HYBRID FACELIFT



PURE DRIVE
S-HYBRID
FUEL EFFICIENCY OF 15.2KM/L*

PERFECT FIT, PERFECT MOMENTS

The New Serena S-Hybrid Facelift offers a spacious **8-Seater** with **14 Flexible Seat Configurations** to fit all your family needs and inspire moments of togetherness. Featuring a refreshed aerodynamic design, bold **3-Dimensional Signature Front Grille** and brilliant **LED Headlamps and LED Signature Lamps**, it expresses a sense of unity paired with luxurious styling. The **Twin Powered Sliding Doors** allows convenient entering and existing for all your loved ones at just one touch. No matter where you go, get more out of each drive with the **2.0L S-Hybrid Engine** that maximizes fuel efficiency of **15.2km/L***.



• Twin Seat with Easy Entry Mode



• LED Headlamps & LED Signature Lamps



• Twin Powered Sliding Doors



• Advanced Multi Graphic Meter

NEW STRAITS TIMES Maybank
CAR OF THE YEAR 2015

MPV OF THE YEAR 2015
awarded by
New Straits Times-Maybank

f NissanMalaysia

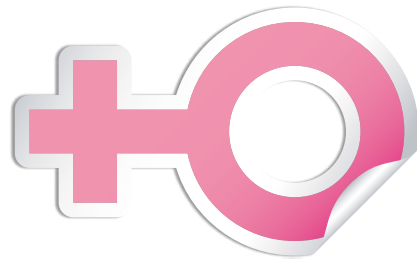
www.nissan.com.my or call 1800 88 3838.

Nissan Serena S-Hybrid 2.0L CVT | Max Power 147ps / 5600rpm | Max Torque 210Nm / 4400rpm.

*Japan JC08 test cycle.
Actual car specifications may vary from model shown.
Terms and conditions apply.



EDARAN TAN CHONG MOTOR SDN. BHD. (230669-H)
A subsidiary of Tan Chong Motor Holdings Berhad (12969-P)



ADVANCING GENDER DIVERSITY

The Renault-Nissan Alliance forges ahead in reducing the gender gap in the auto industry



The Renault-Nissan Alliance is making strong progress in its commitment to narrow the gender gap that exists within the auto industry. The percentage of women employees at both Renault and Nissan has increased from a year ago, particularly in managerial positions.

At Renault, women accounted for 18.4% of all employees globally, up from 17.6% in 2013 (it was 10% in 2000), with 18.3% holding manager-level positions globally in 2014, up from 17% in 2013.

Renault is also a leader in the industry in terms of women holding senior ranks, accounting for two of the 11-person executive committee; Mouna Sepehri, Executive Vice President of the Office of the CEO; and Marie-Françoise Damesin, Executive Vice President for Human

Resources.

Renault targets women to account for 30% of engineering or technical positions, and 50% of sales positions worldwide by 2016. Renault also aims to have women account for 25% of its key global positions by next year.

Nissan leads in Japan

At Nissan, women accounted for 11.7% of manager-level positions globally in 2014, up from 10.6% in fiscal year 2013. In Japan, women at Nissan hold 8.2% of such positions, up from 7.1% in the previous year, and more than five times higher than in 2004.

Nissan is an industry benchmark in Japan, the number of its women managers are more than triple the national average for large manufacturers. Nissan's goal is to have women represent 10% of all



managers, and 14% of all management positions globally by 2017.

In Japan, Nissan is also continuing to expand the first-of-its-kind "Ladies First" retail program. Ladies First dealerships are managed and staffed mostly by women, and features stylish yet comfortable decors, with emphasis on looking after the needs of women and first time car buyers. According to Nissan's internal data, more than 50% of global car purchasing decisions are made by women.

Even as far back as the 1960s, Nissan was already a pioneer in expanding and advancing the role of women at sales outlets in Japan by equipping its "ambassadors" (called Miss Fairlady) with extensive product knowledge so they are able to engage customers more effectively.



Nissan is an industry benchmark in Japan, the number of its women managers are more than triple the national average for large manufacturers.



SAFETY MESSAGE SUCCESSFULLY DELIVERED



The Nissan Safety Driving Experience is the fitting finale to ETCM's year-long campaign in promoting safety



Edaran Tan Chong Motor Sdn Bhd (ETCM) concluded its Nissan Safety Campaign 2015 on a high note with the Nissan Safety Driving Experience, held at the Malaysia Agro Exposition Park Serdang (MAEPS). The one-day event comprising of theory and practical sessions saw 60 Nissan owners and members of media receiving first-hand tutoring from professional instructors on proper car control, as well as how to fully leverage on the various safety features found on Nissan vehicles.

The Nissan Safety Driving Experience was also the final programme under ETCM's sustained effort during 2015 to promote various aspects of safety for the benefit of its customers. Dubbed the Nissan Safety Campaign 2015, it was kicked off in April at LEGOLAND Malaysia with the Kids Safety Carnival – a programme designed to help children cultivate the awareness and appreciation of safe practices, and how to react in emergencies. In total, seven safety-related events were held nationwide for the benefit of thousands of Nissan owners, including those in East Malaysia. On top of that, specially illustrated road safety tips were also

shared via social media channels for a wider reach.

“We received overwhelming response for both our Kids Safety Carnival and Safety Driving Experience from our customers this year, with a total of 1,300 enthusiastic participants. To know that Nissan owners are constantly looking to improve the quality of safety is a great encouragement for us, we look forward to plan many more fun and educational programmes in the future,” said Dato’ Dr. Ang Bon Beng, Executive Director of ETCM, in bringing the Nissan Safety Campaign 2015 to a conclusion.

In conjunction with this year’s Nissan Safety Campaign, ETCM also introduced an ownership rewards programme called NISCARE, developed exclusively for Nissan owners. For only RM30 (before GST) a year, NISCARE members enjoy privileges that include 24-hour Roadside Assistance, five percent savings on Nissan parts and labour services, priority seats for Nissan Customer Events and many other benefits including LEGOLAND perks such as discounts on admission tickets and food and beverages.

DREAMS CAN Come True

Six lucky Nissan owners celebrated their milestones courtesy of ETCM

The Riang Raya Campaign that was run over the months of June and July 2015 in conjunction with the Ramadhan and Syawal festive months was unlike any ETCM had ever held. Upholding Nissan's ethos of "Innovation that Excites", the Riang Raya Campaign focused on rewarding six lucky Nissan car buyers with their choice of a celebration party worth up to RM50,000, complete with the services of an event organizer, decorations, venue rental, sound system, F&B, door gifts, and many others.

"We are always looking for innovative ways to

reward our customers, and we believe that the concept of this 'Riang Raya Campaign' has never been done before here," said Mr. Tan Keng Meng, Director of Marketing and Product Planning, ETCM. "Being able to plan their celebration is a way of us at ETCM to be closer to our customers, and playing a part in creating a wonderful moment for them to share with friends and loved ones. This is something we are extremely honoured to be part of."

So here's how some of the winners made use of their winnings.



CELEBRATING OUR FUTURE

SUHAILA BT. SALEH

Semenyih, Kajang was the location of a joyous Aqiqah ceremony held in celebration of Cik Suhaila's newborn baby. A grand total of 500 family members and friends, including orphans from a nearby orphanage were invited. Every guest received Frozen and Ultraman themed door gifts and feasted on a delicious buffet spread with five roasted lambs as the main course. The event was completed with a Marhaban prayer.





BLISSFUL MATRIMONY

FASEHA BT JELANI

Our winner from Muar, Johor, Puan Faseha utilized her prize to organize an unforgettable wedding for her daughter and son-in-law. The 2,000 invited guests comprising family members and friends who travelled from all corners of Malaysia were greeted by a wedding ceremony noted for its beautiful and classy decorations, as well as colourful door gifts.



SPREADING THE JOY

THENG SOON YEW

Mr. Theng, the winner from Penang, took the opportunity to organize a trip to Legoland for a group of 20 comprising family members and friends, which also two orphans and their guardian from a local orphanage. The party of 20 flew from Penang and stayed two nights at Legoland with accommodation, transportation, food and gifts.



SHOW OF APPRECIATION

TAN YOKE LEONG

As a show of appreciation to donors and devotees of the Nalanda Buddhist Society, Mr. Tan invited guests which also included orphans from a local orphanage at the Marco Polo Restaurant in Kuala Lumpur. The dinner featured a speech by the founder and president of the Nalanda Buddhist Society and performances by its students.





NOW YOU CAN FLY WITH NISSAN

New Nissan owners get to fly for free thanks to the ETCM Millionaire Drive Campaign

As the first grand prize winner of the ETCM Millionaire Drive Campaign (October) and now with 300,000 BIG Points to her name, Che Zainun Tun Binti Mohammed is now in an enviable position to redeem the equivalent of five return flights to Tokyo, Sydney, Beijing, Seoul or other attractive destinations. Che Zainun, who purchased a Nissan Almera 1.5E AT at ETCM Kota Bharu, received her prize in a ceremony held between Edaran Tan Chong Motor and AirAsia BIG, the loyalty programme of AirAsia airline.

In line with the positive response to the campaign, ETCM not only extended the promotion till end of 2015, but also announced that the collaboration will continue into 2016. According to ETCM Executive Director Dato' Dr Ang, the collaboration marks a milestone for ETCM. "We are proud to partner with AirAsia BIG. Like Tan Chong, AirAsia is a true Malaysian icon – a homegrown company that has grown tenfold to become the force that it is now. We have exciting plans in the works to continue



▲ (From left) Vincent Chong, General Manager, WCT Malls, Alice Goh, CEO, AirAsia BIG, Dato' Dr. Ang Bon Beng, Executive Director (ETCM) with the winner



working together well into 2016, and we look forward to a strong alliance that will benefit both parties and our customers."

"Partnering Edaran Tan Chong Motor is a meaningful way for AirAsia BIG to make possible for holiday goers to travel to their favourite holiday destinations. Customers don't just get to enjoy an adventurous drive on the road with their Nissan vehicles, but also the rewarding experience of travelling by air for free with their BIG Points. Being an AirAsia BIG Member also opens doors to exclusive priority access for AirAsia flight sales, and free AirAsia flight redemptions to over 100 destinations from as low as 500 BIG Points," said Alice Goh, CEO of AirAsia BIG.

In addition to the Grand Prize, 14 other Consolation Prize winners also pocketed 50,000 BIG Points that could see them travel to various local destinations, or redeem two return flights to Siem Reap, Yangon, Bangkok or Chiang Mai.

PERFECT TIMING

Nissan owners win Tag Heuer timepieces worth RM19,500 each!

In conjunction with the nation's 58th Merdeka celebration which coincided with Tan Chong Motor's 58-year existence in Malaysia, and in collaboration with Tag Heuer and Cortina Watch, customers who purchased their Nissan vehicles over the month of August and September stood the chance to win a TAG Heuer Carrera NISMO Calibre 16 Day-Date Chronograph special edition timepiece – a watch that was specially conceived to commemorate Nissan's return to the 24-hour Le Mans endurance race in 2015.

The six lucky winners were announced in November 2015, and they were Lai Chee Shyan (Grand Livina 1.6L A/T), Tan Choong Boon (Almera 1.5E

A/T), Pushpa A/P Veeran (X-Trail 2.0L CVT), Nurkamaliah Binti Mohd Asrah (Almera 1.5E A/T), Mastura Binti Mohamad Amin (Grand Livina 1.6L A/T) and Nurnadia Binti Nasrudin (X-Trail 2.0L CVT).

30-year old Nurkamaliah Binti Mohd Asrah, who works in the banking industry, said, "I did not believe that I won and was extremely delighted when I heard the news. As a first-time Nissan owner, I feel honoured to be accepting this gift and I will be sharing this happiness with my husband. I would like to thank Edaran Tan Chong Motor for this special gift."



▲ (From left) Christopher Tan, Executive Director, Tan Chong Motor Holdings Bhd, Amelia Sillard, Vice President, TAG Heuer SEA, Tay Liam Khooon, Managing Director, Cortina Watch Malaysia



▲ Dato' Dr. Ang Bon Beng, Executive Director (ETCM) with the winners and regional representative

NISSAN RULES KL CITY STREETS

V8 Supercar exhibition race vows KL fans; Nissan Motorsports wins final challenge race.



As a curtain raiser to the eventual staging of an official leg of the V8 Supercar Championship in 2016, a five-car exhibition race was held on the 3.2km street circuit of the KL City Grand Prix in August.

Featuring representatives from the main manufacturers that compete in the V8 Supercar Championship, namely Holden, Ford, Volvo, Mercedes-Benz AMG and Nissan, the teams and their drivers lit up the tight street circuit and vowed race fans over the weekend with some close racing action.

The Nissan Altima race car piloted by veteran campaigner Todd Kelly is powered by a race-prepped 5.0-litre V8 with an output in excess of 635bhp, capable of completing the 0-100km/h sprint in 3.4 seconds and a top speed close to 300km/h. Kelly took victory in the final challenge race, finishing ahead of Volvo's Scott McLaughlin and Mercedes-AMG's Will Davidson.

PEACE OF MIND WITH NISCARE

Subscribe to NISCARE and let us take good care of you

While Nissan vehicles are renowned for their reliability and durability, there are times when the unpredictable can happen when you're on the road. Whether the incident is minor or serious in nature, NISCARE can provide you a peace of mind throughout your ownership of a Nissan vehicle.

For a highly affordable annual subscription fee of only RM30 (excluding 6% GST), NISCARE members have access to:

NISCARE Vehicle Breakdown

& Accident Assistance: Around-the-clock, 24-hour, 365 days vehicle breakdown and roadside assistance, including towing, minor on-the-spot repairs and related services

NISCARE Home Assistance:

Plumbing repairs, electrical repairs, air-con maintenance and locksmith services

NISCARE Lifestyle & Concierge

Services: Preferential rates for car

rental, hotel bookings, golf tee-off reservations, flower deliveries

NISCARE Savings To You: 5% discount on genuine Nissan spare parts and labour charges

But over and above a peace of mind whether on the road or at home, a NISCARE subscriber also enjoys privileges such as priority seating during exclusive Nissan customer events and are also first on the list of invitees to new Nissan model previews.

And in a special tie-up with LEGOLAND MALAYSIA RESORT for the benefit of NISCARE subscribers – Malaysia's premiere children theme park – members also get a 35% discount on LEGOLAND admission tickets, 20% off on food and beverages, 10% off on merchandise and a further 20% reduction on the price of the customised Driving License upon completion the Nissan Driving School at LEGOLAND.

Terms & Conditions apply



NISCARE®

To sign up, please visit the nearest ETCM showroom or service centre, or call 1-800-88-3838.



35% OFF
with every purchase
of admission tickets

20% OFF
with min purchase
of RM120
(Food & Beverage only)

10% OFF
with min purchase
of RM150
(LEGO Play Material only)

20% OFF
with min purchase
of 2 Driving License

Promotion valid until 30th June 2016 Terms & Conditions apply



▲ (From left) Dato' Dr. Ang Bon Beng, Executive Director (ETCM), Madam Wang Shu Erh, Dato' Tan Heng Chew, President, Tan Chong Motor Holdings Bhd, Dato' Sri Liow Tiong Lai, Minister of Transportation, Malaysia, Dato' Rosie Tan, Executive Vice President, Tan Chong Motor Holdings Bhd, Dato' Abdul Samah Mat, Ketua Polis Selangor, Kenji Naito, Senior Vice President, Nissan Motor Asia Pacific

ETCM OPENS FLAGSHIP 4S CENTRE

Glenmarie 4S Centre offers first class service and a unique retail experience to Nissan customers

Edaran Tan Chong Motor (ETCM) reaffirmed its commitment to customer service with the opening of the flagship 4S Centre located in Glenmarie, Selangor – the fifth major facility within a span of 14 months, following Kuching, Tawau, Johor Jaya and Taiping.

Officiated by Dato' Sri Liow Tiong Lai, Minister of Transportation Malaysia, the five-storey, 165,318-sq. feet Glenmarie 4S Centre caters to vehicle sales, servicing, spare parts and body repair and paint respray. On top of that, customers can also browse through certified pre-owned vehicles by MUV at a display area as well as access to hire purchase and insurance services. In offering a unique retail experience that is above and beyond expectations, the Glenmarie 4S Centre also houses dedicated outlets including a motorsports boutique showcasing original NISMO and Impul accessories, a V-Kool tinting and car care speciality

shop and a Zen Lounge with luxurious massage chairs.

Speaking at the opening ceremony, ETCM Executive Director Dato' Dr Ang said, "We stand by our philosophy to provide quality products and services to our customers across our network. Be it at a 1S or a 3S Centre, customer satisfaction comes first from the moment they step through the door. With a total investment of about RM20 million, this new flagship 4S Centre is the epitome of services that we envision to provide to our customers in ETCM and Nissan. Its strategic location – right in the heart of the established automotive industrial hub in Glenmarie makes it extremely convenient and accessible for our customers."

The Glenmarie 4S Centre is able to display up to 15 vehicles, with 27 service bays and the capacity to handle up to 100 cars per day, or an average of 3,000 vehicles a month.

CARING FOR
YOUR NISSAN

SERVICE CENTRES

We have a wide network of service centres nationwide to provide care for your vehicle, ensuring your Nissan is able to perform at its best, and that you will enjoy an uncompromising driving experience, mile after mile

NISSAN CUSTOMER CARE CENTRE

1800-88-3838

Roadside Assistance | Service Appointment | General Enquiries

NISSAN



CENTRAL REGION

BALAKONG 03-9075 3121		
BATU CAVES 03-6185 4930		
CHAN SOW LIN 03-9222 0801		
KOTA DAMANSARA 03-6140 2573		
PETALING JAYA 03-7955 3288		
SETAPAK 03-4023 7180		
BANTING 03-3191 2203		
GLENMARIE 03-5569 5009		
KLANG 03-3344 7020		
KUALA LUMPUR 03-6257 2451		
PUCHONG JAYA 03-5885 1108		
PUCHONG 03-8060 6473		
RAWANG 03-6091 0011		
SHAH ALAM 03-5510 2558		
TANJONG KARANG 03-3281 2278		

NORTHERN REGION

ALOR SETAR 04-733 9639		
BAYAN LEPAS 04-642 1900		
BUKIT MERTAJAM 04-538 0891		
BUTTERWORTH 04-390 7203		
KANGAR 04-977 8671		
KULIM 04-495 1348		

LANGKAWI 04-967 1415		
PENANG 04-281 6410		
SUNGAI PETANI 04-421 1446		
IPOH 05-506 2809		
IPOH (MENGLEMBU) 05-282 3052		
SITIAWAN 05-692 4180		
TAIPING 05-847 7600		
TELUK INTAN 05-621 8043		

SOUTHERN REGION

BATU PAHAT 07-438 2101		
JOHOR JAYA 07-364 2596		
KLUANG 07-772 0811		
MUAR 06-954 1414		
SEGAMAT 07-943 6525		
SKUDAI 07-511 3035		
TAMPOI 07-331 9812		
AYER KEROH 06-233 2599		
MELAKA (CHENG) 06-334 3959		
MELAKA (TUN PERAK) 06-335 4700		
MELAKA (MALIM JAYA) 06-336 2478		
NILAI 06-797 1635		
PORT DICKSON 06-646 3910		
SEREMBAN 06-764 7252		

EAST COAST REGION

CHENDERING 09-617 0869		
KUALA TERENGGANU 09-631 7181		
KOTA BHARU 09-747 8618		
TANAH MERAH 09-958 3838		
INDERA MAHKOTA 09-573 0768		
KEMAMAN 09-868 3591		
KUANTAN 09-517 7366		
KUANTAN - GAMBANG 09-536 3161		
TEMERLOH 09-277 8807		

EAST M'SIA: SABAH & SARAWAK

KOTA KINABALU 088-422 258		
KOTA KINABALU 2 088-233 817		
KENINGAU 087-339 296		
LABUAN 087-420 819		
LAHAD DATU 089-883 831		
SANDAKAN 089-223 700		
TAWAU 087-778 173		
KUCHING 082-388 888		
SIBU 084-313 020		
BINTULU 086-332 280		
MIRI 085-322 921		

EARLY BIRD

OPEN AT 7.30AM

EXTENDED HOURS

OPEN UNTIL 8.00 PM

EV SERVICE BRANCH

SERVICING FOR ELECTRIC VEHICLES

365 DAYS

OPEN 7 DAYS A WEEK INCLUDING PUBLIC HOLIDAYS

BODY & PAINT

VEHICLE RESPRAY & RESTORATION CENTRE

SERVICE BOOKING

At Nissan, we provide convenience by offering you the choice of making your service appointment through phone or e-booking.

PHONE BOOKING

Call the Nissan Customer Care Centre at 1800 88 3838 to book your service appointment 3 days in advance

eBOOKING

Save time by scheduling your next service appointment online:

Call 1800 88 3838 to get your user ID and Password (one time activity).

log-in at www.tceas.com with your user ID and Password, and follow on the instructions on the website.

Always remember to make an appointment to enjoy a hassle-free service experience!

For more info, please visit www.tceas.com

NOTE: INFORMATION IS CORRECT AT THE TIME OF PRINTING, MAY BE SUBJECT TO CHANGE.



THE TAMA ELECTRIC CAR

Did you know that Nissan's first electric car dates back to 1947?

In post-war Japan, oil was a scarce commodity, however, the supply of electricity was plentiful. Due to the shortage of petroleum, the Japanese government promoted the manufacture of electric vehicles, and it was against this backdrop that the Tama electric car – Nissan's first ever EV – was conceived in 1947.

The Tama was well ahead of its

time, it was designed with battery compartments (on each side of the car) that rested on rollers so that battery packs can be swapped easily. In tests conducted by the Ministry of Commerce and Industry, the prototype vehicle exceeded its performance specifications with a cruising range of 96.3km and a top speed of 35.2km/h. Due to the Tama's usable electric range, it was deployed

mainly as taxis and undertook passenger-carrying duties until 1950.

Sixty years later in December 2010, Nissan launched the Leaf, the world's first mass-produced electric car, and by far the best-selling zero-emission vehicle. In 2012, Edaran Tan Chong Motor kick-started the Leaf pilot programme, with actual sales commencing in 2013

SPECIFICATIONS

Motor output:	4.5hp (DC series-wound)
Batteries:	Lead acid (40V/162Ah)
Range:	65km
Top speed:	35km/h
Seating:	4 persons
Kerb weight:	1,100kg
Wheelbase:	2,000mm
Length:	3,035mm
Width:	1,230mm
Height:	1,630mm



Ultimate Destination For Your Vehicle Body Repairs And Painting

SERVICES AVAILABLE:

01 PERIODIC MAINTENANCE SERVICE AND MAJOR REPAIRS



02 CHASSIS RE-ALIGNMENT

Restore your vehicle to manufacturer specifications and vehicle body strength (passive safety).



03 CAR COMPLETE RE-SPRAY AND VEHICLE PAINT TOUCH UP

We only use Nissan Japan approved paint materials and manufacturer.

STEP 1:

Colour Matching System

Use Nissan colour code with computerized data formula for high color matching accuracy.



STEP 2:

2K Paint Finishing

OEM approved paint for high quality and durability.



STEP 3:

Infrared Drying System and Spray Booth

Shorten the paint drying time means quicker repair cycle time.



04 CAR WASH AND VEHICLE POLISHING



QUALITY SERVICE - FULLY EQUIPPED WITH ADVANCED BODY REPAIR EQUIPMENT

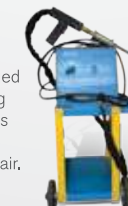
DRY SANDING SOLUTION

- Shorten the process of sanding.
- Prevent rust to the body panels.



ELECTRIC DENT PULLER MACHINE

- Repair vehicle damaged area without removing door-trims, roof-linings or other components.
- Fast and efficient repair.



SPOT WELDER MACHINE

- Recommended Nissan Japan repair standards.
- Similar welding type as in the assembly plant.



MIG WELDER MACHINE

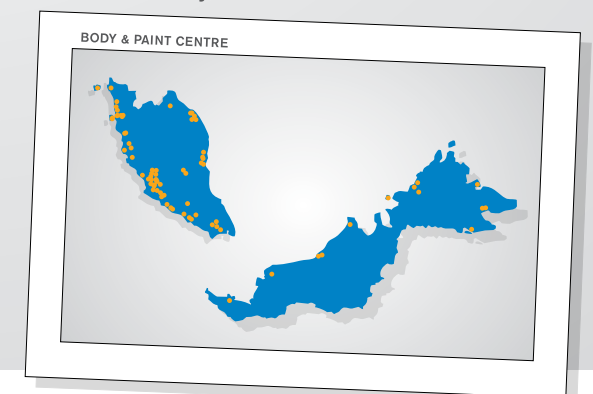
- Welding equipment as per Nissan recommended standards.
- Retain metal strength and integrity.



QUALITY PARTS



Please call Nissan Customer Care Centre at **1800-88-3838** or log on to **www.nissan.com.my** for Body & Paint service network.



TAN CHONG EKSPRES AUTO SERVIS SDN. BHD.

BODY & PAINT



Innovation
that excites

ALL-NEW X-TRAIL



DRIVE TO PROSPERITY IN RED

Welcome fortune and abundance with the New X-Trail, now available in Red to make every drive an auspicious and exciting one. Powered by **2.5L** or **2.0L Twin CVTC Engines** and **XTRONIC CVT** paired with a **7-speed Manual Mode** for a wealth of exhilarating performance and fuel efficiency. Together with an **Around View Monitor** and **All-Mode 4x4-i System**, you're in total control of your drive to success this brand new year.

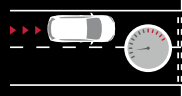
Reawaken the urban thrill now at your nearest Nissan showroom. *Red X-Trail* available in limited units.



FAMILY SUV OF THE YEAR 2015
awarded by
iCar Asia Limited



Watch the action-packed
video here!



ACTIVE ENGINE BRAKE

Applies engine braking to deliver smoother deceleration

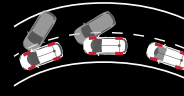
WORLD FIRST



ACTIVE RIDE CONTROL

Brakes and adjusts engine torque when hitting road bumps

WORLD FIRST



ACTIVE TRACE CONTROL

Steer through corners with control and confidence

NISSAN FIRST



HILL START ASSIST

Prevents rollback when starting on incline



ADVANCED HILL DESCENT CONTROL

Descend steep declines safely as HDC controls the vehicle speed for you



NissanMalaysia

www.nissan.com.my or call 1800 88 3838.

2.5L 4WD Twin CVTC | Max Power 171ps / 6,000rpm | Max Torque 233Nm / 4,000rpm
2.0L 2WD Twin CVTC | Max Power 144ps / 6,000rpm | Max Torque 200Nm / 4,400rpm
Subject to change without prior notice. Terms and conditions apply.
Actual car specifications may vary from model shown.



EDARAN TAN CHONG MOTOR SDN. BHD. (230669-H)
A subsidiary of Tan Chong Motor Holdings Berhad (12969-P)